



ANTEGO

Antego offers everything you expect from an outdoor umbrella. Its operating system allows you to easily move and tilt your umbrella in any desired direction. This outdoor umbrella is developed to complement any outdoor area and give the protection you need all summer long.



300 x 200 cm




300 x 300 cm



ø 350 cm

- ✓ Full aluminium frame
- ✓ Tilt in height
- ✓ Tilt left and right
- ✓ Rotate 360° around its pole

 Ambiance pictures

 360°



FRAME

Free pole umbrella with crank handle.
Pole & ribs are aluminium powder coated.
Pole profile: 90 x 65 x 2,5 mm, 3,5 x 2,5 x 0,1".
Ribs profile: 28 x 14 x 1,2 mm, 1,1 x 0,5 x 0,04".

CANOPY

270g/m², 100% solution dyed acrylic.

TILT

Tilt in height, left and right and rotate 360° around its pole.

WIND SPEED

39 km/h, 24.2 mph - Maximum wind speed to which the umbrella may be exposed.

jardinico[®]

FRAME



A01 white A03 linen A12 alu teak A14 lava A30 anthracite A32 black

CANOPY



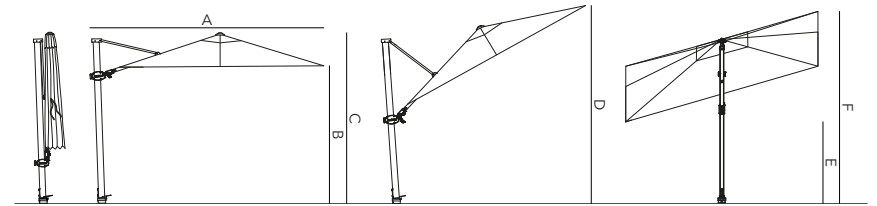
Fabric of choice
see overview p.8

200 X 300 CM

300 X 200 CM

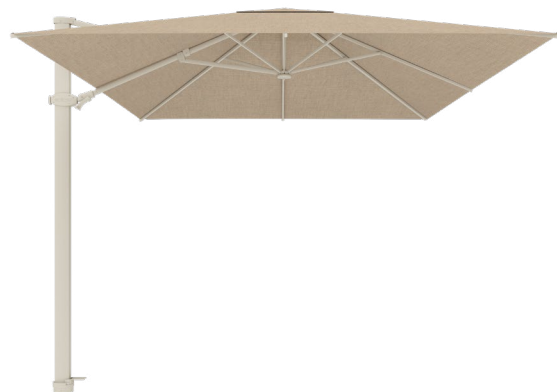
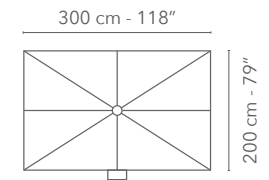
Weight net Weight gross Packaging CBM / CCF

UMANT UMBRELLA FRAME & CANOPY 26 kg - 57.3 lbs 30 kg - 66.1 lbs 267 x 42 x 18.5 cm, 0.2 cbm



300 X 200 CM

A	275 cm - 108.3"
B	203 cm - 79.9"
C	262 cm - 103.1"
D	280 cm - 110"
E	130 cm - 51.2"
F	300 cm - 118.1"



FRAME



A01 white A03 linen A12 alu teak A14 lava A30 anthracite A32 black

CANOPY



C001 natural C010 latte Fabric of choice see overview p.8

300 X 300 CM

300 X 300 CM

Weight net

Weight gross

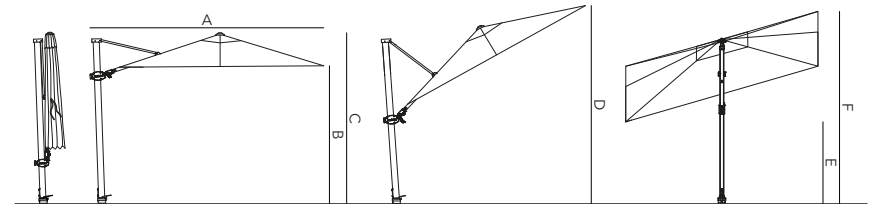
Packaging CBM / CCF

UMANT UMBRELLA FRAME & CANOPY

28 kg - 61.7 lbs

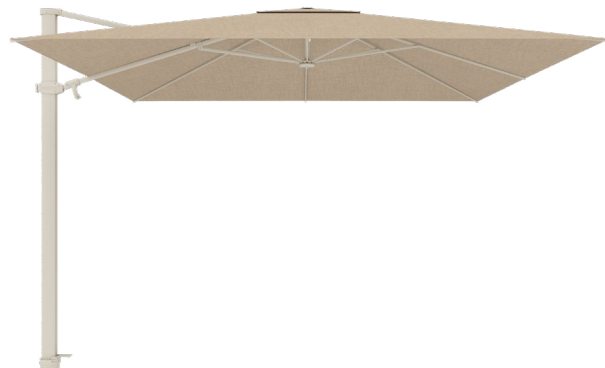
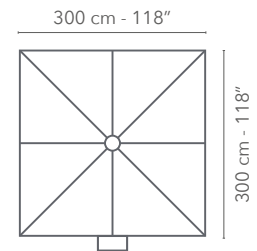
32 kg - 70.5 lbs

267 x 42 x 18.5 cm, 0.2 cbm



300 X 300 CM

A	375 cm - 147.6"
B	203 cm - 79.9"
C	262 cm - 103.1"
D	355 cm - 139.8"
E	130 cm - 51.2"
F	300 cm - 118.1"



FRAME



A01
white



A03
linen



A12
alu teak



A14
lava



A30
anthracite



A32
black

CANOPY



Fabric of choice
see overview p.8

∅ 350 CM

∅ 350 CM

Weight net

Weight gross

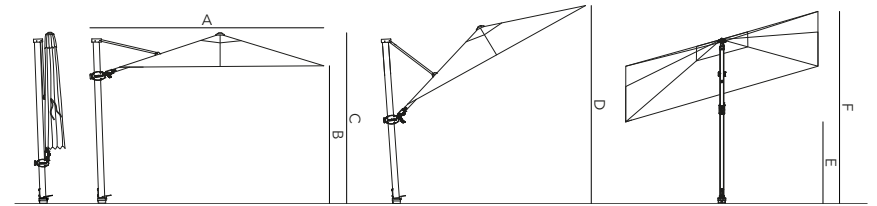
Packaging CBM / CCF

UMANT UMBRELLA FRAME & CANOPY

27 kg - 59.5 lbs

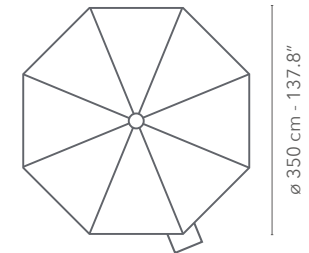
31 kg - 68.3 lbs

267 x 42 x 18.5 cm, 0.2 cbm



∅ 350 CM

A	427 cm - 168.1"
B	188 cm - 74"
C	261 cm - 102.8"
D	441 cm - 173.6"
E	130 cm - 51.2"
F	375 cm - 92.5"



BASES

SILK GREY GRANITE	Weight net	Weight gross	Packaging CBM / CCF
UBANT-125CA-0G4 BASE	125 kg - 276 lbs	130 kg - 286 lbs	94 x 94 x 18 cm
UBANT-EW60-G04 2 HALF TILES	60 kg - 132 lbs	62 kg - 136 lbs	94 x 94 x 10 cm
UABTEN-SP037-SET 4 STAINLESS STEEL WHEELS			
UABANT-SP037(A)-SET 4 SYNTHETIC WHEELS			



92.5 x 92.5 x 5 cm
36.4 x 36.4 x 2"

G04 light grey granite, bush hammered

92.5 x 92.5 x 5 cm
36.4 x 36.4 x 2"

G04 light grey granite, bush hammered
2x 30 kg, 2x 66 bs

BLACK GRANITE	Weight net	Weight gross	Packaging CBM / CCF
UBANT-125-G32 BASE	125 kg - 276 lbs	130 kg - 286 lbs	92.5 x 92.5 x 17.5 cm
UABTEN-SP037-SET 4 STAINLESS STEEL WHEELS			
UABANT-SP037(A)-SET 4 SYNTHETIC WHEELS			



92.5 x 92.5 x 5 cm
36.4 x 36.4 x 2"

G32 black granite, bush hammered

SANDSTONE	Weight net	Weight gross	Packaging CBM / CCF
UBANT-125-G13 BASE	125 kg - 276 lbs	132 kg - 291 lbs	92.5 x 92.5 x 17.5 cm
UABTEN-SP037-SET 4 STAINLESS STEEL WHEELS			
UABANT-SP037(A)-SET 4 SYNTHETIC WHEELS			



92.5 x 92.5 x 5 cm
36.4 x 36.4 x 2"

G13 sandblasted finish

BASES

CONCRETE	Weight net	Weight gross	Packaging CBM / CCF
UBANT-125-B01 BASE	125 kg - 276 lbs	130 kg - 286 lbs	92.5 x 92.5 x 17.5 cm
UBANT-125-B03 BASE	125 kg - 276 lbs	130 kg - 286 lbs	92.5 x 92.5 x 17.5 cm
UBANT-125-B32 BASE	125 kg - 276 lbs	130 kg - 286 lbs	92.5 x 92.5 x 17.5 cm
UABTEN-SP037-SET 4 STAINLESS STEEL WHEELS			
UABANT-SP037(A)-SET 4 SYNTHETIC WHEELS			



92.5 x 92.5 x 5 cm
36.4 x 36.4 x 2"

B01 white, B03 linen, B32 black

POWDER COATED STEEL	Weight net	Weight gross	Packaging CBM / CCF
UBANT-125-S01 BASE	125 kg - 276 lbs	130 kg - 286 lbs	92.5 x 92.5 x 17.5 cm
UBANT-125-S03 BASE	125 kg - 276 lbs	130 kg - 286 lbs	92.5 x 92.5 x 17.5 cm
UBANT-125-S30 BASE	125 kg - 276 lbs	130 kg - 286 lbs	92.5 x 92.5 x 17.5 cm
UBANT-125-S32 BASE	125 kg - 276 lbs	130 kg - 286 lbs	92.5 x 92.5 x 17.5 cm
STAINLES STEEL CHEMICAL ANCHORED			incl.



97 x 97 x 1.5 cm
38 x 38 x 0.6"

S01 white, S03 linen, S30 anthracite, S32 black



BASES

IN GROUND BASE

Weight net

Weight gross

UBIGB-FP-5G-MEDIUM

5.7 kg - 12.6 lbs

8.5 kg - 18.7 lbs



ø 14.5 x 50 cm
ø 5.7 x 19.8"

steel

ON GROUND BASE

Weight net

Weight gross

UBOGB-FP-5G-MEDIUM

7.5 kg - 16.5 lbs

9 kg - 19.8 lbs

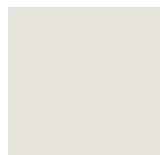


ø 17 x 1.2 cm
ø 6.7 x 0.5"

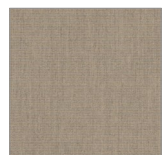
steel

UMBRELLAS

CATEGORY 3



C003 pearl



C011 cotton



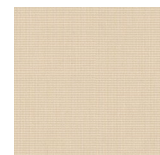
C022 nile



C025 mushroom



C026 howlite



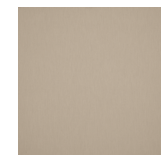
C027 moonstone



C028 flax



C029 wheat



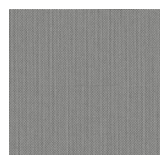
C030 papyrus



C031 nutmeg



C100 ice



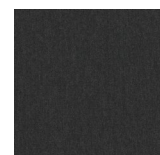
C107 mooncrest



C114 concrete



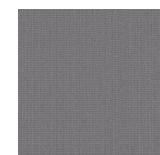
C115 cadet



C207 onyx



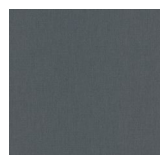
C210 pitch



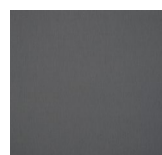
C216 rock



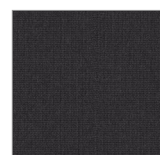
C217 iron



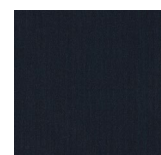
C218 pewter



C219 titanium



C220 basalt



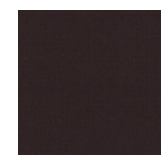
C221 faroe



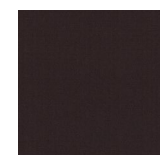
C222 slate



C305 umber



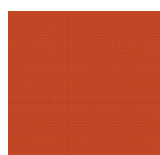
C308 gravel



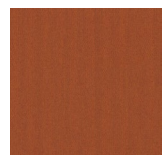
C309 ebène



C452 sunset



C453 rotala



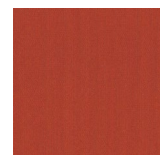
C454 gobi



C455 burgundy



C456 crimson



C457 sunrise



C458 fjord



C459 lapis



C460 celestial



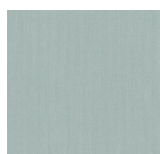
C461 marine



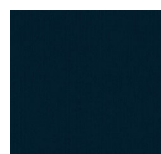
C462 teal



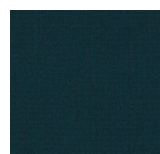
C463 navy



C464 glacier



C465 loyal



C466 emerald



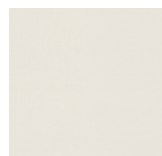
C468 berry

FABRICS

CATEGORY 2



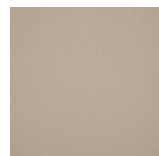
C019 tofu



C020 powder



C023 heather



C032 tulle



C033 lin



C034 antique



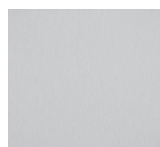
C035 trush



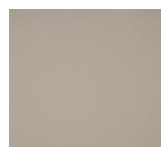
C036 fawn



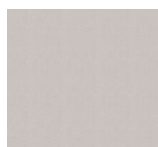
C112 fog



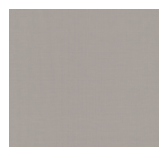
C113 plaster



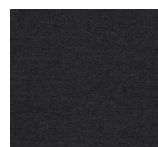
C116 cobble



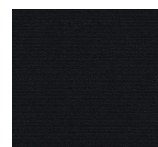
C117 milk



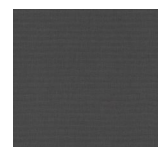
C118 steam



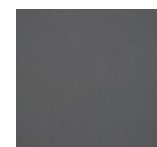
C214 eclipse



C215 shadow



C223 fuel



C224 lead



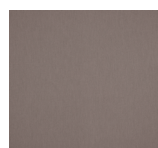
C225 ardoise



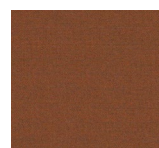
C226 tweed



C227 blackboard



C307 cacao



C310 amber



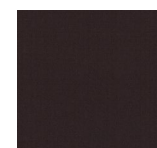
C311 vino



C312 chestnut



C313 auburn



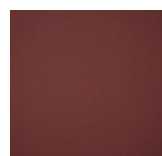
C314 chocolate



C402 tangerine



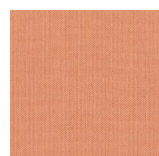
C403 pink



C409 brick



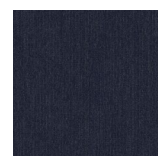
C443 moss



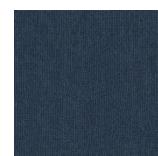
C444 peach



C450 arctic



C451 belharra



C469 mistral



C470 merlot



C471 antelope



C472 hive



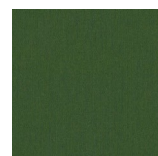
C473 poppy



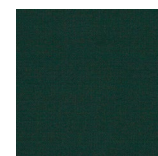
C474 pepper



C475 vivid



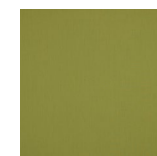
C476 calathea



C477 pinea



C478 macao

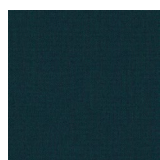


C479 lichen



C480 seafoam

FABRICS



C481 beryl



C482 adriatic



C483 trust



C484 cyan

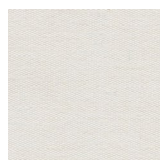


C485 curacao



C486 crisp

CATEGORY 1



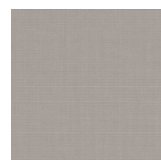
C001 natural



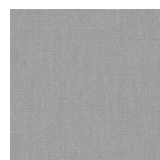
C010 latte



C024 clay



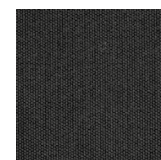
C101 cloud



C106 gris nature



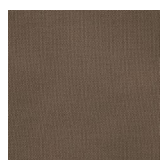
C204 night



C208 black



C211 steel



C301 taupe



C304 walnut


	Category 3	Category 2	Category 1
composition	100% solution dyed acrylic	100% solution dyed acrylic	100% solution dyed polyester
grammage	320 g/m ²	260 g/m ²	270 g/m ²
Lightfastness	level 7-8	level 7-8	level 6-7
water resistance	1000 mm	400 mm	100 mm
UV protection	> 98%	> 98%	> 98%

PROTECTION & LUNA LED LIGHT

PROTECTION COVER

We suggest to always use the protection cover to protect your outdoor umbrella from poor weather conditions or when not in use during the summer. The stain resistant and water repellent cover will extend their life for you to enjoy your umbrella whenever you like.

To enhance the durability and appearance, we recommend following our care instructions regularly.

Ref.	Colour	Swatch	About this fabric
X75	Grey		100% solution dyed polyester with PU coating



MAINTENANCE

To enhance the durability and appearance, we recommend following our care instructions regularly.

The umbrella should never be used in strong wind or rainy conditions. An open umbrella should never be left unattended. The umbrella should be protected against blurring or damage by using its protection cover. The protection cover can be placed over the umbrella and pole. Store the umbrella in a dry place when not in use.

Before use, you can apply an invisible film to make the canopy stain and water repellent by using a textile protector. Clean the aluminium frame with a damp cloth, mild soap and water. Do not use any sharp tool to avoid scratches. You can maintain and clean your canopy by following a few simple steps:

- Brush off loose dirt before it becomes embedded in the fabric.
- Hose down.
- Spot clean soon after stains occur with water and mild soap or textile cleaner (no detergents). Use a soft bristle brush to clean.
- Allow soap to soak in.
- Rinse thoroughly.
- Always let the canopy air dry completely before storing or covering.

Machine wash in cold water. Depending on wash load size, use normal amounts of mild laundry detergent and add 1 cup of bleach. Allow fabric to air dry.



Maintenance set:
2 scrubbing sets
3 application cloths
Textile protector 750 ml
Textile cleaner 750 ml



MADE FOR **SHADE &**
OUTDOOR LIVING.

www.jardinico.com